

SELF-CLINCHING FLUSH HEAD STUDS- IPFH

NOTES

The following installation panel material hardness limitations apply when installing Self Clinching Studs.
 Steel Clinch Studs: 80 HRB Max,
 300 Series Stainless Steel Clinch Studs: 70 HRB Max,
 400 Series Stainless Steel Clinch Studs: 92 HRB Max (A special anvil is recommended for a proper installation),
 Aluminum Clinch Studs: 50 HRB Max.

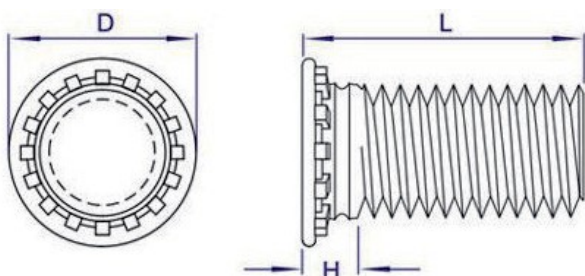


IPFH

THREAD AND PITCH	D +/- 0.4	H Max	Min Sheet Thickness	Hole Size + 0.08 - 0.00	Min Distance to edge of Sheet
M3 x 0.5	4,6	2,1	1,0	3,0	5,6
M3.5 x 0.6	5,3	2,2	1,0	3,5	6,4
M4 x 0.7	5,9	2,4	1,0	4,0	7,2
M5 x 0.8	6,5	2,7	1,0	5,0	7,2
M6 x 1.0	8,2	3,0	1,6	6,0	7,9
M8 x 1.25	9,6	3,7	2,4	8,0	9,0

STANDARDS LENGTHS

THREAD AND PITCH	Length +/- 0.4										
	6	8	10	12	15	18	20	25	30		
M3	6	8	10	12	15	18	20	25	30		
M3.5	6	8	10	12	15	18	20	25			
M4	6	8	10	12	15	18	20	25	30		
M5		8	10	12	15	18	20	25	30	35	
M6			10	12	15	18	20	25	30	35	
M8			10	12	15	18	20	25	30	35	40



MATERIALS AND PLATING

- Carbon Steel
- 300 series Stainless Steel
- Zinc
- Plain