

FLUSH NUT - TYPE IPF

APPLICATION

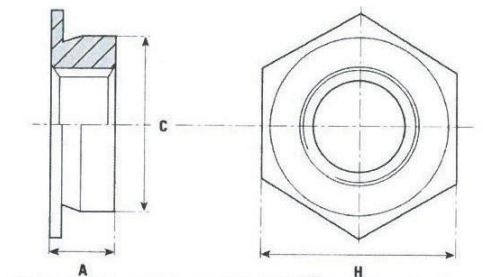
The type IPF installs in thin metal sheet by pressure on the hex head. The sheet metal flows into the groove and provides secure locking. The IPF installs flush on both sides.



IPF TYPE

Thread	Shank Code	Min. sheet metal thickness	A max.	Hole -0.00/+0.08	C max.	H	Minimum edge distance to center of panel hole
M2	1	1.5 - 2.3	1.50	4.35	4.34	4.8	6.0
	2	≥2.4	2.30				
M2.5 M3*	1	1.5 - 2.3	1.50	4.35	4.34	4.8	6.0
	2	≥2.4	2.30				
M3	1	1.5 - 2.3	1.50	5.40	5.39	6.4	6.7
	2	≥2.4	2.30				
M3.5	1	1.5 - 2.3	1.50	5.40	5.39	6.4	6.7
	2	≥2.4	2.30				
M4	1	1.5 - 2.3	1.50	7.35	7.34	7.9	7.0
	2	≥2.4	2.30				
M5	1	1.5 - 2.3	1.50	7.90	7.89	8.7	8.0
	2	≥2.4	2.30				
M6	3	3.2 - 3.9	3.00	8.75	8.74	9.5	8.7
	4	4.0 - 4.7	3.80				
	5	≥4.8	4.60				

3* = M3 in body M2



MATERIAL

- INOX A2
- OTHER MATERIAL ON DEMAND