

DIN INSERTS FOR OVERMOULDING – SERIES 16903

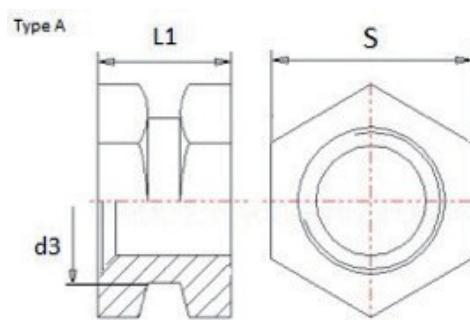
APPLICATION

Insert to DIN 16903 standard for overmoulding use in plastics. All size variations are possible on request.



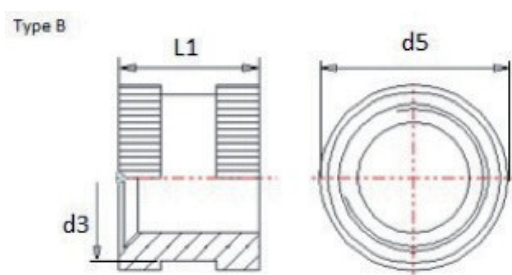
SERIES 16903 – TYPE A

Thread	S	d3	L1
M3	5	3.8	3
M4	6	5	4
M5	7	6.4	5
M6	9	7.4	6
M8	11	10.4	8



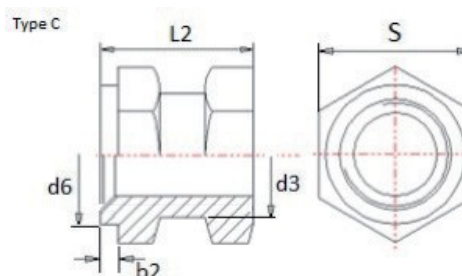
SERIES 16903 – TYPE B

Thread	d5	d3	L1
M2.5	3.8	3.4	2.6
M3	4.2	3.8	3
M4	5.5	5	4
M5	7	6.4	5
M6	8	7.4	6



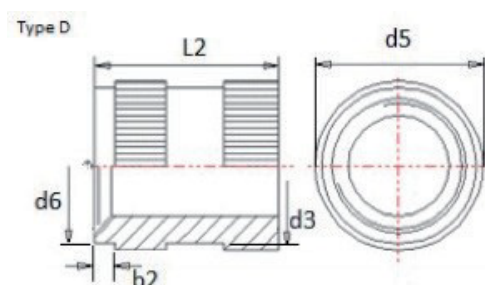
SERIES 16903 – TYPE C

Thread	S	d3	b2	L2	d6
M3	5	3.8	1	4.5	4.2
M4	6	5	1	6	5.5
M5	7	6.4	1	7.5	7
M6	9	7.4	1	9	8
M8	11	10.4	1	12	10



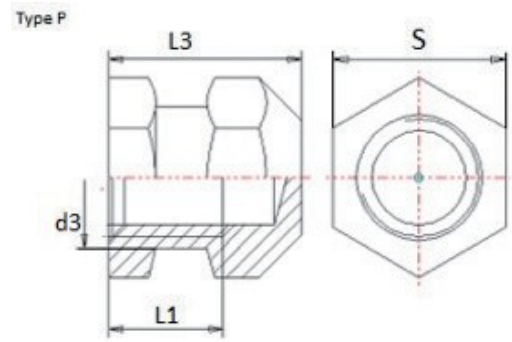
SERIES 16903 – TYPE D

Thread	d5	d3	b2	L2	d6
M2.5	3.8	3.4	0.8	4	3.8
M3	4.2	3.8	1	4.5	4.2
M4	5.5	5	1	6	5.5
M5	7	6.4	1	7.5	7
M6	8	7.4	1	9	8



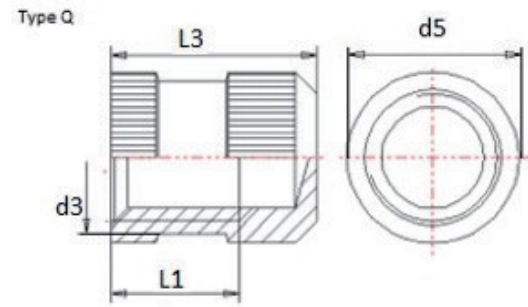
SERIES 16903 – TYPE P

Thread	S	d3	L1	L3
M3	5	3.8	3	5.5
M4	6	5	4	7
M5	7	6.4	5	8.3
M6	9	7.4	6	9.8
M8	11	10.4	8	12.6



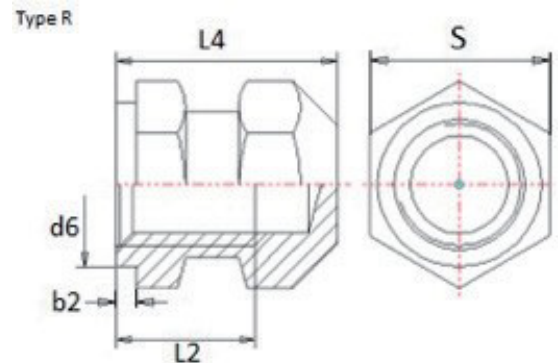
SERIES 16903 – TYPE Q

Thread	d5	d3	L1	L3
M2.5	3.8	3.4	2.6	4.6
M3	4.2	3.8	3	5.5
M4	5.5	5	4	7
M5	7	6.4	5	8.3
M6	8	7.4	6	9.8



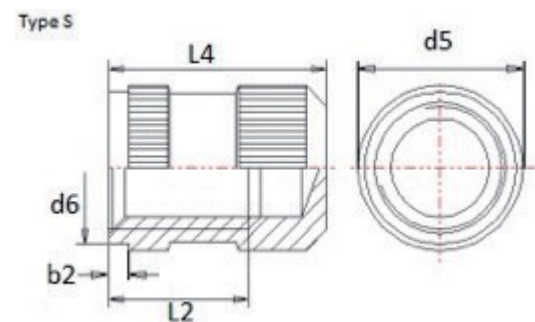
SERIES 16903 - TYPE R

Thread	S	d6	b2	L2	L4
M3	5	4.2	1	4.5	7
M4	6	5.5	1	6	9
M5	7	7	1	7.5	10.8
M6	9	8	1	9	12.8
M8	11	10	1	12	16.6



SERIES 16903 – TYPE S

Thread	d5	d6	b2	L2	L4
M2.5	3.8	3.8	0.8	4	6
M3	4.2	4.2	1	4.5	7
M4	5.5	5.5	1	6	9
M5	7	7	1	7.5	10.8
M6	8	8	1	9	12.8



MATERIALS AND FINISH

- Brass as standard
- Other materials and finishes on request
- Plain
- Nicked-plated