

GEWINDEEINSÄTZE ZUM EINBETTEN - SERIE 16903

ANWENDUNG

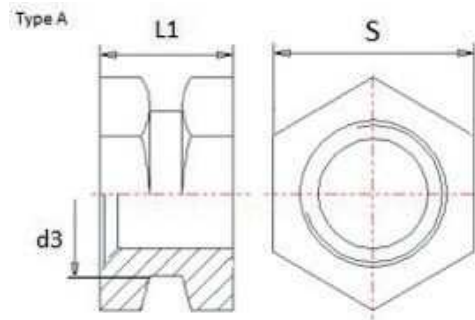
GEWINDEEINSATZ GEM. DIN 16903. ALLE FORMEN, SONDERFORMEN UND WERKSTOFFE MÖGLICH.

**Aussendurchmesser vor dem Rändeln



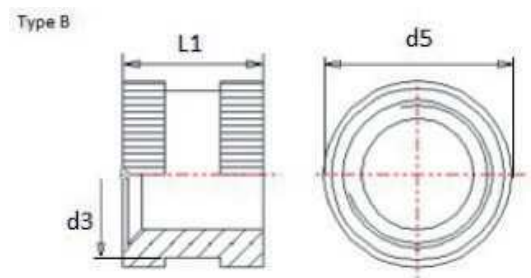
SERIE 16903 TYP -A-

Gewinde	S	d3	L1
M3	5	3.8	3
M4	6	5	4
M5	7	6.4	5
M6	9	7.4	6
M8	11	10.4	8



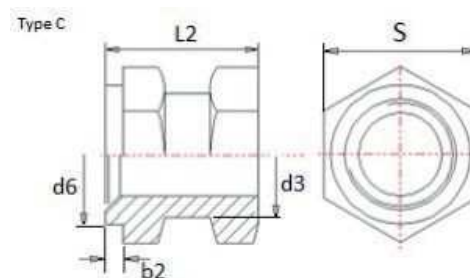
SERIE 16903 TYP -B-**

Gewinde	d5	d3	L1
M2.5	3.8	3.4	2.6
M3	4.2	3.8	3
M4	5.5	5	4
M5	7	6.4	5
M6	8	7.4	6



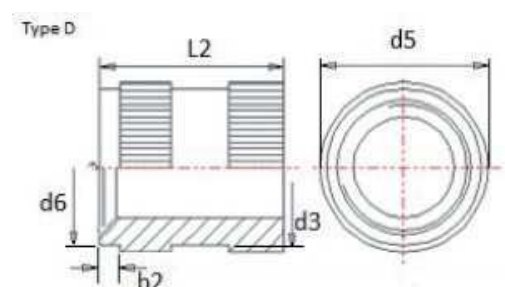
SERIE 16903 TYP -C-

Gewinde	S	d3	b2	L2	d6
M3	5	3.8	1	4.5	4.2
M4	6	5	1	6	5.5
M5	7	6.4	1	7.5	7
M6	9	7.4	1	9	8
M8	11	10.4	1	12	10



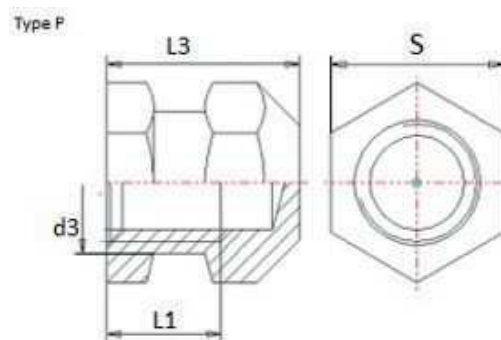
SERIE 16903 TYP -D-**

Gewinde	d5	d3	b2	L2	d6
M2.5	3	3.4	0.8	4	3.8
M3	4	3.8	1	4.5	4.2
M4	5	5	1	6	5.5
M5	7	6.4	1	7.5	7
M6	8	7.4	1	9	8



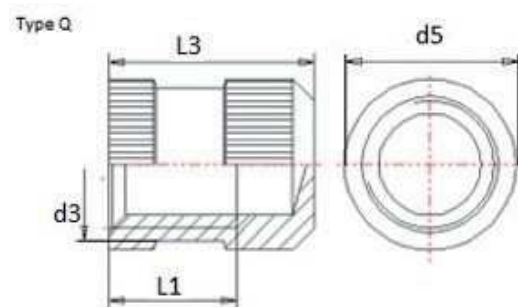
SERIE 16903 TYP - P-

Gewinde	S	d3	L1	L3
M3	5	3.8	3	5.5
M4	6	5	4	7
M5	7	6.4	5	8.3
M6	9	7.4	6	9.8
M8	11	10.4	8	12.6



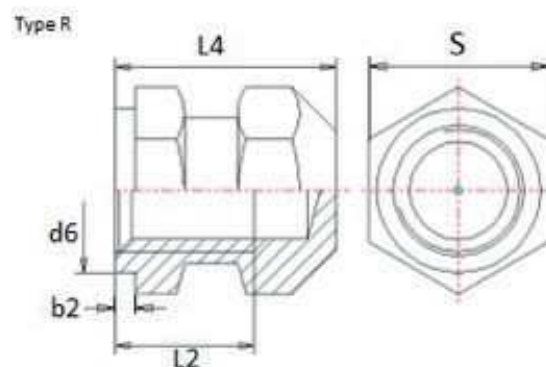
SERIE 16903 TYP -Q-**

Gewinde	d5	d3	L1	L3
M2.5	3.8	3.4	2.6	4.6
M3	4.2	3.8	3	5.5
M4	5.5	5	4	7
M5	7	6.4	5	8.3
M6	8	7.4	6	9.8



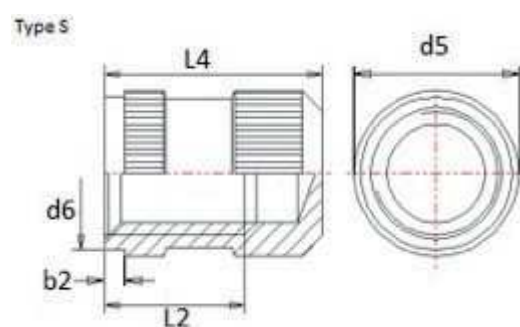
SERIE 16903 TYP -R-

Gewinde	S	d6	b2	L2	L4
M3	5	4.2	1	4.5	7
M4	6	5.5	1	6	9
M5	7	7	1	7.5	10.8
M6	9	8	1	9	12.8
M8	11	10	1	12	16.6



SERIE 16903 TYPE -S-**

Gewinde	d5	d6	b2	L2	L4
M2.5	3.8	3.8	0.8	4	6
M3	4.2	4.2	1	4.5	7
M4	5.5	5.5	1	6	9
M5	7	7	1	7.5	10.8
M6	8	8	1	9	12.8



WERKSTOFFE UND BESCHICHTUNGEN

- Standard: Messing
- Andere Werkstoffe und Beschichtungen auf Anfrage
- vernickelt
- verzinkt